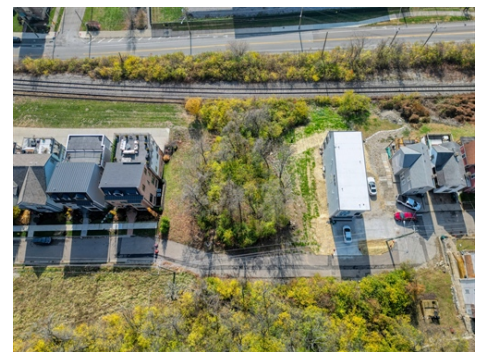


Hoff Avenue Lot



Hoff Avenue, Cincinnati, OH 45226

- » Land
- » Stunning views of Downtown Cincinnati and the river
- » Walkable access to dining, shops and entertainment
- » Full utility access and tax abatements
- » Perfect blend of city living and outdoor enjoyment
- » More Info: HoffAvenueLot.com



Anne Donnellon
(513) 405-4598
anned@comey.com
<https://www.annedonnellon.comey.com/>

Comey & Shepherd
REALTORS.

Comey & Shepherd
6901 Wooster Pike
Cincinnati, OH 45227
(513) 561-5800

Build your dream home with stunning views of Downtown Cincinnati and the river! This nearly 1/3 acre lot in the East End offers rare space and flexibility - 100 ft wide x 128 ft deep, more than double the width of most nearby parcels. Bordering Walworth Junction, site of the 2020 Homearama, this property combines scenic beauty with urban convenience.

Enjoy walkable access to Columbia-Tusculum dining, shops and entertainment, plus a quick drive to Hyde Park, Oakley, Mt. Lookout and Downtown. Nearby Schmidt Recreation Complex and the upcoming Oasis Trail (linking to the Ohio River and Little Miami Trails - scheduled to begin in 2027) make this a perfect blend of city living and outdoor enjoyment. With full utility access and tax abatements, this is a one-of-a-kind chance to build an architectural masterpiece.

Bring your own builder or develop new construction - an incredible opportunity to create something extraordinary in one of Cincinnati's most

